



Judging Matters

A newsletter of GCO Judges' Council

Issue 3 December 2024

Contents

	Page
Co-Chairs' Letter	1
Editor's Note	1
Your New Board	2
JSCC Update	8
Horticulture	8
Good Bugs/Bad Bugs	
Design Styles	10
Tribute in Memoriam	11
Making Your Own Herbal	
Tea Mixtures	12
Breaking News	13
Save the Dates	14
Upcoming Events	15

Contact us:

Co-Chairs

Anne Harbord:
anneclark.flowers@gmail.com

Mary-Ann Vercammen
ma.vercammen@hotmail.com

Judging Matters

Claudette Smith
claudettesmithj@gmail.com

Judging Bulletin

Mary McLean
mmclean@dombre.com

Co-Chairs' Letter

Greetings Judges and Student Judges,

What a great day for the first Judges' Council meeting of our term at Landscape Ontario on November 5, 2024. We had a beautiful facility for the presentations and a great cafeteria space for lunch.

We also hosted the GCO Fall meeting in the same facility the day before with Sandra Pella as the guest speaker. The GCO Board was pleased with both the presenter and the facility.

Our new Judges' Council Board is already active in their various roles. Their photos and bios are included in this newsletter. Please read them so you get to know our great team.

We have dates set for our **Spring (April 28)** and **Fall (Sept 22)** meetings in 2025. As soon as our programs are finalized, you will be sent details. Please mark your calendars to reserve the dates. All Judges' Council regular meetings will be held at Landscape Ontario offices in Milton.

We are looking forward to putting together great programs over the next two years. If you have any suggestions for programs or speakers, please contact either one of us.

Wishing you all a Merry Christmas and a very Happy New Year.

Anne Harbord: anneclark.flowers@gmail.com
Mary-Ann Vercammen: ma.vercammen@hotmail.com

Editor's Note: When recently surveyed, you asked for more information on invasive plants and species. We listened. Please read article on "Good Bugs, Bad Bugs" with links, then stayed tuned for future issues for comment writing on affected exhibits on show tables.

Your New Board

Co-Chair, Mary-Ann Vercammen



An accredited GCO Judge of Design, an accredited RBG Judge of Horticulture and a certified OHA Judge of Design and Horticulture, Mary-Ann is also an accredited specialty Judge of Roses (CRS), Lilium (NALS) and Dahlias (ADS). She is a member of WAFA, Milne House Garden Club (former Director of Horticulture), the Toronto Botanical Garden Society and a member of several OHA Societies where she has been in charge of the Flower Show Committees and on the Board. She is currently on the Board of Newmarket Horticultural Society.

Mary-Ann is also a member of the Hamilton & Burlington Rose Society, the Canadian Rose Society, the Canadian Dahlia and Chrysanthemum Society, the Hamilton Chrysanthemum and Dahlia Society, the Greater Toronto Bulb Society and the Ontario Regional Lily Society where she is currently a Director on the Board.

Mary-Ann has also attended WAFA events in India, Barbados, Ireland and the United States, and entered WAFA in the USA, Ireland and Barbados where she won an award. Her winning design from Barbados was published. She has also participated in the WAFA Judging Program. She continues to participate in various Horticultural and Design programs around Southern Ontario and internationally. Mary-Ann is looking forward to participating in the upcoming WAFA Australia event.

In high demand as a judge, demonstrator and speaker across Ontario, Mary-Ann spends much time travelling from event to event and town to town. Mary-Ann enters many shows as well and has won many awards in Society and District Flower Shows, as well as OHA Conventions, Successful Gardening, Canada Blooms, the CNE, the Hamilton & Burlington Rose Show, the ORLS Lily Show, the Canadian Chrysanthemum and Dahlia Society and the Hamilton and District Chrysanthemum and Dahlia Flower Show.

Mary-Ann has recently been prime on the Flower Show schedules for the CNE. She is currently involved in setting the Show Schedules for the 2025 CNE. In addition, she has judged Front Gardens with Communities in Bloom and several County Fair Horticultural and Design Shows in Southern Ontario.

Mary-Ann lives in Newmarket where she enjoys playing among the flowers. In addition to her many Horticultural and Design qualifications, Mary-Ann is also a licensed welder.

Co-Chair, Anne Harbord



Anne is an accredited GCO Judge of Design, an accredited RBG Judge of Horticulture and a certified OHA Judge of Design and Horticulture. Anne co-Chaired the OHA District 2 Judging School in 2009-2010. She is a specialty Judge of Roses (CRS) and Lilies (NALS). She studied Sogetsu design for 12 years with the late Sensei Gregory Williams in the Toronto Sogetsu Branch. She was studying to be a Sogetsu teacher when her late husband died. She returned to Ottawa to be close to her son and family. She is a member of several Specialty Societies and OHA Horticultural Societies.

As OHA District 2 Director from 2019 to 2024, Anne was Host Director for the 2023 OHA Convention. Anne is currently the co-Director for District 2 until their Annual Meeting in May 2025. In 2012, Anne suggested to the OHA that they plant trees across Ontario for the Queen's Diamond Jubilee. In 2022, in honour of the Queen's Platinum Jubilee, Anne organized the planting of Bur Oaks for the OHA and District 2 at the site of Canadensis, the future National Botanical Garden of Canada. Anne was a Director of Canadensis from 2022 to 2024, participating on the Program Committee. Anne continues to be a member of the Canadian Botanical Garden Society and is currently working on their tree nursery. In 2020, Anne organized the first judged virtual Flower Show in Canada and co-wrote guidelines for Judging Virtual Flower Shows for the OHA.

Anne is a GCO Past Director, National/International Liaison and Past Director-at-Large. She is also Past-President of Cloverleaf Garden Club of Mississauga and Life member, Past-President of the Hamilton & Burlington Rose Society, current Director of the Ontario Regional Lily Society and member of the Ottawa Garden Club.

Anne is a speaker, workshop leader and demonstrator on Design and Horticulture topics both in-person and virtually. Anne was Chair, Design for the 2008 OHA Convention in Brampton and judged Design and Roses at the OHA Conventions in Waterdown and Peterborough. She was on the small team that wrote the Flower Show schedule for the 2023 OHA Convention. Anne has written the five Design Schedules for the 2025 CNE. Anne has won many special Awards at Society, District and OHA Conventions as well as Milne House Garden Club (Best Use of Colour), Successful Gardening (BIS Invitational Class), the Hamilton and District Chrysanthemum and Dahlia Show and the ORLS Lily Show (BIS, JC and three firsts in same Show). Her International experience includes entering and judging two virtual Flower Shows for the South African Floral Union.

In 2012, Anne was awarded the Queen's Golden Jubilee Medal for her community work with the OHA and Rotary. Anne is a three-time recipient of the highest Award in Rotary, the Paul Harris Fellow Award, for her work with international Exchange Students, raising funds for scholarships for children in Jamaica, fundraising for special boats for disabled sailors and her involvement with designing the perennial beds at the first Cancer Survivors Park in Canada at the Credit Valley Hospital in Mississauga. Anne also designed the seven perennial beds at the Manotick Remembrance Park where she was the Horticulturist on the Planning Committee from 2015 to 2017. Anne was placed on the OHA Honour Roll in 2006 and in 2023, received the OHA Silver Award.

Anne and her husband Roger are small-scale beekeepers, living in the hamlet of Prospect about 45 km south-west of Ottawa.

Note: For over nine years, Anne and Mary-Ann have been co-Chairs, Design for the Ontario Regional Lily Society Flower Show. Their creative and innovative approaches to the selection of themes and classes continue to attract top designers to enter this Flower Show.

Director, Claudette Smith



Claudette is an accomplished international designer, demonstrator and speaker with numerous published designs. She has exhibited at WAFA shows in Toronto, Scotland, Boston, and Barbados and won at several WAFA events. She is Past-President of GCO and Past-President of Milne House Garden Club of Toronto. Claudette also served as GCO International/National Liaison.

Her judging credentials include an accredited Rose Judge (Canadian Rose Society 2024) as well as an accredited GCO Design Judge ('96) and an accredited RBG Horticultural Judge ('00). She is a member of the Hamilton & Burlington Rose Society, Huronia Rose Society, Orillia Horticultural Society and Greater Toronto Bulb Society.

South of the border, Claudette has been active with the National Garden Clubs, Inc. where she is a Life Member, former Design Instructor and current Accredited Master Judge. Claudette has also served on Boards of Garden Clubs in Nassau, Freeport, Cayman Islands and Turks & Caicos.

In her new role with Judges' Council, Claudette will be responsible for publishing "Judging Matters".

Director, Ellen Clark



Ellen has agreed to continue on the Board of Judges' Council which will provide some continuity. She will Chair the Judging Standards Clarification Committee (JSCC). All committee members have agreed to stay on. Ellen will also provide Zoom communications for Judges' Council Board meetings and JSCC meetings.

Ellen is an accredited GCO Design Judge and an accredited RBG Horticultural Judge. She is a member of the Garden Club of Toronto and currently is enjoying participating in and judging international shows.

Director, Mary McLean



Mary is an accredited GCO Design Judge and an accredited RBG Horticultural Judge. She is a Member of Milne House Garden Club and North York Horticultural Society. Mary has continuing connections with both OHA and Rhododendron societies. Mary is a current member of the Niagara Rhododendron Society. She continues the study of Ikenobo.

Mary will undertake the responsibility for organizing logistics for all Judges' Council in-person meetings and events. In addition, Mary will publish our new communique "Judging Bulletin".

"In seed time, learn; in harvest time, teach; in winter, enjoy."

– William Blake

Secretary, Marie Decker



Marie is continuing her role of Secretary from the previous Judges' Council. Aside from managing the minutes from all Judges' Council meetings, Marie is also responsible for updating the Judges' Council Green Book and Judges' accreditation updates.

Marie is a member of Oakville Horticultural Society, Burlington Horticultural Society and Past-President of the Hamilton & Burlington Rose Society. Marie is an accredited GCO Design Judge, an accredited RBG Horticultural Judge as well as a certified OHA Judge of Design and Horticulture. She is also an accredited Rose Judge and a member of the Canadian Rose Society and the American Rose Society.

Treasurer, Cathy Faber-Rowlands



Cathy was Treasurer under Heinke Thiessen's Chairmanship and has agreed to return to this role. Cathy is an accredited GCO Design Judge and an accredited RBG Horticultural Judge.

Cathy is a member of the Etobicoke Horticultural Society where she has been a member of the Board on several occasions as well as a member of the Flower Show Committee.

Zoom/Photography Co-ordinator, Elizabeth Schleicher



Elizabeth has agreed to provide all of the conferencing support for our regular meetings and pop-up meetings. She is also the photographer of all of our meetings, demonstrations and special events.

Elizabeth is an accredited GCO Design Judge, an accredited RBG Judge of Horticulture and an accredited Rose Judge with the Canadian Rose Society (CRS). Elizabeth has been on the Board of the Hamilton & Burlington Rose Society (HBRS) forever. She is on the Board of the Canadian Rose Society as Judges' Chair and Zoom Host. Elizabeth organizes the virtual Rose Judging Shows for HBRS and is Chair of their Annual Rose Show. She was also Principal for the latest CRS Rose Judging School.

Elizabeth has a special love for miniature designs, so if you want to know more about them, she is the lady with whom you should be speaking.

Thank You:

We wish to thank Frances Ellison, President, Garden Club of London, who joined the Board in August. Unfortunately, she resigned at the end of September due to the high level of time commitment from other projects with which she is involved. We wish her good luck with all of the events being planned for their Club's 75th Anniversary in 2025.

**"Winter, a lingering season, is a time to gather golden moments,
embark upon a sentimental journey and enjoy every idle hour."**

John Boswell

Judging Standards Clarification Committee Update: by Ellen Clark

The Judging Standards Clarification Committee (JSCC) is a committee of Judges' Council. The mandate of JSCC is to clarify and interpret OJES, not to rewrite it. We welcome questions from Judges about situations that they may encounter when they are judging. When you submit a question to any of us, we always bring your question to the group for discussion.

More on the importance of schedule writing: Many of the questions we receive are related to interpretation/clarification of the show schedule. It is helpful to have definitions in a schedule to assist the entrant as well as judges.

The question was asked: can a flowering branch be entered in a show in the 'any other flowering perennial' class?

The answer: It may help if the schedule clarifies what a perennial is:

Perennial: A plant that lives for more than two years.

For flower show purposes, the term perennial does not refer to tender perennials which are treated as annuals in our climate or to trees, shrubs, conifers and hardy vines. Hardy perennials may be herbaceous (e.g. *Echinacea*), woody (e.g. *Lavendula*), or evergreen (e.g. *Bergenia*, *Iberis*). Hardy plants from bulbs, corms, tubers and rhizomes are herbaceous perennials but should be classified separately in a show schedule.

Periodically, we produce a document containing topics we've discussed. Watch for it in your email inbox, save it and print it for future reference. You can send your questions to any member of the committee: Ellen Clark, Marie Decker, Ursula Eley, Cat McGill, Lil Taggart, Heinke Thiessen and ex officio, Anne Harbord and Mary-Ann Vercammen.

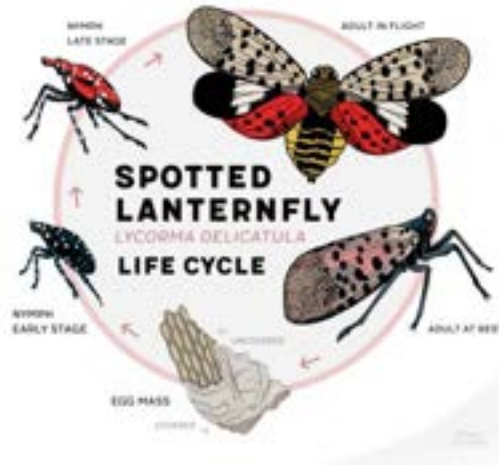
Horticulture Article: "Good Bugs, Bad Bugs": by Claudette Smith

What is entomology? Entomology is the study of insects. Insects are arthropods which have exoskeletons, i.e. hard outer covering with jointed legs. Over one million different insect species are identified. Entomology is useful to understand human diseases, agriculture, ecology and biodiversity.

Insect predators feed on other invertebrates that harm crops. Ladybugs are good bugs that biocontrol scale insects, mealy bugs, mites and soft-bodied pests as well as insect eggs. Insects eat and break down dead and decaying debris preventing clogged or infected soil and water streams. They are recyclers. [source: Royal Entomological Society – www.royensoc.co.uk]

Spot, squish, report it! [source: Invasive Insect Species Centre, Canada] Invasive lantern flies may head north from the NY Finger Lakes Region of upstate New York where the bug was spotted for the first time this past summer. They have a fondness for grapes and a propensity to proliferate. The distinctive red and white-spotted lantern fly may look beautiful BUT officials urge vigilance as this invasive species tracks north. Native to parts of Asia, it was detected at a Pennsylvania landscaping company that imported stones in 2014 and now has migrated to 17 U.S. States, wrecking crops. They have been spotted on 100 grape-type crops.

Traps have been set in different areas of Ontario. [Debbie Zimmerman, President, Ontario Grape Growers Association.]



The Secret Life of Plants - Solidago altissima (goldenrod) - “When faced with a problem, some plants, e.g. tall goldenrod, seem to display decision-making abilities, powered by a kind of memory. One lab experiment suggests they 'hear' the screams of their neighbours when under attack. They change the ways their leaves reflect red light which nearby goldenrod can detect. Neighbouring plants which understand the signals launch into a defence system, which includes growing faster and producing more chemicals that deter insects.” [source: theweathernetwork.com]

Opinion: “Many insect species are plunging globally. We need to care and love the harder-to-love insects in our hope to protect interconnected communities forming our healthier ecosystem. This includes wasps.” wrote Serian Sumner on August 10, 2024 in The Globe & Mail. Serian Sumner is a professor of behavioural ecology at University College, London and author of *“Endless Forms: The Secret World of Wasps”*.

Did you know about apex predators? Well, in the insect world, wasps have a critical role keeping populations of other insects and anthropoids in check: wasps hunt for flies, beetles, cockroaches, spiders, weevils and caterpillars. Yellow-jacket wasps of North America plus paper wasps from South America act as decomposers and recyclers by scavenging dead birds to feed its brood in its nest. Polistes paper wasps in Canada are effective pollinators like bumblebees – they transfer as much pollen as bees complementing what bees do. We need backup pollinators for our degrading environment to support healthy bee hives and colonies.

Question: What does all this mean to judges of flower shows?

Answer: It is useful to consider degree of

+ degree of perfection, distinction, superiority or

– degree of impairment of horticultural exhibits

but in design, art develops from nature's unique or unusual occurrences.

Design Styles: by Claudette Smith

There can often be confusion between contemporary, modern and free style designs. Below are examples of each with reference to OJES page definitions.



Contemporary Armature

Designer Shirleyan English,
London, Ontario
Photographer Elizabeth
Schleicher

“Grand Gesture”
Features *Anthurium*, *Monstera*,
Heliconia
Publication - Vision of Beauty
2017 Calendar, April



Modern

Designer Claudette Smith,
Ontario, Canada
Photographer John Jernigan

Tall lime container highlights gold
ting ting, gold ribbon weaving
technique into *Phormium* with
Phalaenopsis
Cover Design “Dimensions”
Volume 14, Number 1
Spring / Summer 2014. The
Magazine of Creative Floral
Arrangers of the Americas



Free Style

Designer Claudette Smith
Ontario, Canada
Photographer Helen Petrianos

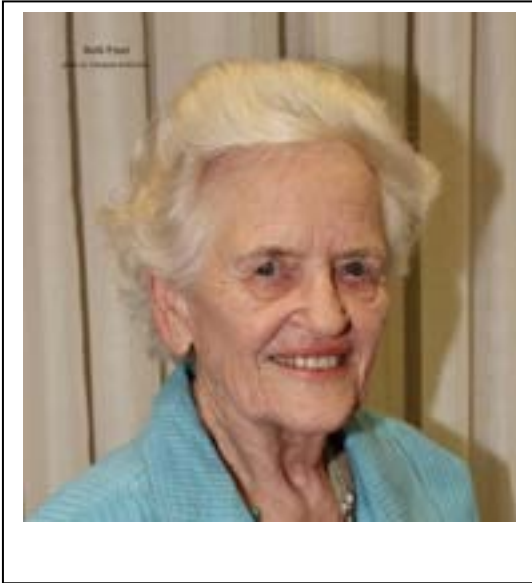
“Peace”
Pair of pottery containers with a
spiral of *Medellino* highlighted by
Protea cynaroides 'King White'
Publication - Vision of Beauty
2017 Calendar, February

OJES page 135 defines Contemporary as a style of design that is in current or recent fashion, as opposed to Period, Traditional, or Modern.

OJES page 145 defines Modern as a design circa 1860's to 1960's with no preconceived patterns, few components, new shapes, sculptural qualities, dynamic balance, movement and bold colours, e.g. Modern Mass, Modern Line, Modern Line Mass, Abstract, Kinetic

OJES page 140 defines Free Style design as not conforming to any named type.

In Memoriam: Beth Frost by Claudette Smith



Tribute to Honorary GCO Past President, Sustaining Judge, Honorary Past President Milne House Garden Club, mentor, friend:

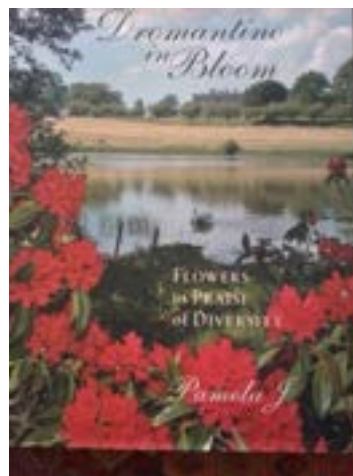
Beth Frost (1924 - 2024)

When I met Beth for the first time after a master class seminar, a floral design adventure opened up. Later, she was one of my sponsors into Milne House Garden Club of Toronto. This was followed by serving on the National Council of Garden Clubs, Inc. (NGCI) Membership Committee when Beth was Chair for English-speaking countries worldwide.

In 2006, Beth received an invitation by the late Reverend William McMillan MBE to install a design for Canada at a time when her beloved husband and dear brother had passed within two weeks apart. She told me she didn't know if she was strong enough to travel. I offered help. Four GCO judges travelled to Northern Ireland (from the right in photo below) Beth Frost, Georgie Lefroy, Maureen Naylor and Claudette Smith.

The book, "Dromantine in Bloom - Flowers in Praise of Diversity" by Pamela J. illustrates Beth's design using a black iron pedestal with *Lilium* 'Casablanca'.

Designers from 21 countries shared their inspirational talents in an oasis of respect and friendship, united by the love of flowers. It was a remarkable collaboration in such an inspiring flower festival at Dromantine.



Making Your Own Herbal Tea Mixtures: by Anne Harbord

Incorporating herbs, fruits and spices into our cooking is instinctive, yet these aromatic elements can also be transformed into homemade herbal teas and blends. By drying your own ingredients and crafting tea blends at home, you enhance the benefits further. These herbal tea concoctions are both nutritious and calming.

Drying Herbs for Teas - Dehydrating fruits and herbs for tea is not only straightforward, but you might already have all the ingredients on hand or growing in your garden! This process is also an excellent way to prepare for winter by preserving your summer's bounty of fresh, seasonal ingredients.

You can dehydrate various parts of a single plant, including its fruit, flowers, roots and leaves. However, remember that different plants and their parts can vary widely; some may be edible, while others may be toxic. For instance, you can dry the fruit and leaves of berries and the flowers of chamomile, whereas you will dry the buds of lavender. It's essential to research the best techniques for harvesting and preparing the specific herbs you intend to use. Always pick your herbs before they are in bloom, as they will have the best flavour. Remove the peel of your citrus with a citrus peeler and dry in the oven. Watch the time carefully or they will burn.

The tea you create will likely be herbal tea, which, despite its name, does not use traditional tea leaves. Homemade herbal tea made from pesticide-free or herbicide-free ingredients results in the best flavour. The dehydration time required for each ingredient varies, so refer to online guides for dehydrated fruits, herbs and spices, which include recommended times and temperature settings for your dehydrator, if you have one. I dry my herbs in an oven which has been warmed to 175F. I then turn the oven off and place the freshly cleaned herbs on a tray for approximately 45 to 60 minutes. "Trial and error" is the best method to determine how long each herb needs to dry, so start with short periods and small increments.

Blending and Brewing Homemade Tea - Water temperature, water quality and the time steeping are important considerations for a great cup of tea. The amount of time a tea is steeped as well as the quantity of tea ingredients becomes a matter of personal preference. To start, pour boiling water over a teaspoon to a tablespoon of the dried herbal tea blend and steep for 5 to 10 minutes. From there you can adjust the amount of herbs and steep time to your liking.

Keep in mind that different types of tea steep best at different water temperatures and for different amounts of time. After learning to dehydrate your ingredients, you can customize temperature, steeping time and tea weight to your preferences for the best cup of tea at home, every time.

You can enjoy your home-dried tea "leaves" as single ingredients or create your own blend suited to your taste. Homemade loose-leaf tea also makes a great gift! Some blend suggestions are below to get you started, but always experiment to find which ratio of ingredients you love best. Combine dried (not powdered) herbs/fruit/leaves/spices in a bowl when blending ingredients. Store your dehydrated tea ingredients and herbal tea blends in cool, dry and tightly sealed in a container, away from light and moisture, for 6 months to a year.



Herbal Tea Recipes

Apple and Mint Tea

5 parts dried Apple Mint or Peppermint leaves
1 part Apple fruit (dried and cut)
Small pieces of Cinnamon Stick
Mix together and place into a metal tin with lid.
Use 1 Tsp to 1 Tbsp of tea mixed in 8 oz. of boiling water
Steep to taste. Add a small amount of honey if desired.

Calendula Lemon Tea

Make approximately 1 C tea blend:
1/2 C / 14 g lemon balm leaves,
1/4 C / 7 g lemon verbena leaves,
1/4 C / 10 g calendula flowers.
Use 1/2 to 1 T blend per 8 oz boiling water. Steep for 5-10 minutes

Lemon and Ginger Root tea

7/8 C / 23 g lemon fruit (zest and pulp)
1/8 C / 9 g ginger root
Use 1 T of tea blend per 8 oz boiling water.
Steep to taste. Add honey if desired.
Note: Can also be made with oranges or limes.

Mint and Raspberry Leaf Tea

Makes approximately 1 C tea blend
1/2 C / 13 g mint leaf and
1/2 C / 13 g raspberry leaf or blackberry leaf
Use 1/2 to 1 T blend per 8 oz boiling water. Steep for 5-10 minutes

Lemongrass Tea

Lemongrass is an annual that grows well in full sun in garden beds or planters. One plant is normally sufficient. In Summer, cut fresh green (2-3) leaves, wash and cut into one-inch strips. Place in a teapot and cover with boiling water. Steep for 5-10 minutes.
In the Fall, cut, remove the dead leaves and let the rest dry for a few days. Cut into one-inch sections and place into a tin with a tight lid. Use one Tsp with 8 oz boiling water and steep.

Breaking News - Bruno Duarte will be our guest Designer on April 28, 2025. He is the owner and Creative Director of Fresh Floral Creations, Toronto and multi award-winning Floral Architect and Artist. **Registration Deadline February 1, 2025. For members** - Full day \$200, Demo only - \$100, Workshop only - \$125. **After the Deadline**, we open to non-members. Costs will be Full day - \$250, Demo only - \$125, Workshop only - \$150. Register with Cathy Faber-Rowlands, JC Treasurer crwf@sympatico.ca



SAVE THE DATES

Meetings and Events for 2025

- April 7 – GCO Spring meeting
- April 9-11 – 8th School for Floral Design Judges – Session 1 at LO, Milton
- April 28 – Judges' Council Meeting – full day with International Designer
Bruno Duarte, Owner Fresh Floral Creations, Toronto
Floral Architect and Artist at LO Milton
- June 4 – GCO Annual Meeting in London
- Aug 20-31 – WAFA Australia 14th World Seminar
- Sept 17-19 – 8th School for Floral Design Judges – Session 2 at LO, Milton
- Sept. 22 – Judges Council Meeting – full day of Design TBC at LO Milton
- Oct. 1 – Garden Club of London 75th Anniversary dinner and demonstration
with Lea Romanowski
- Oct 2-3 – Garden Club of London – design demos and workshops
with Lea Romanowski
- Oct 23 – GCO Fall Meeting - location TBC

Meetings and Events for 2026

- April?? – GCO Spring Meeting date and location TBC
- April 27 – Judges' Council International Designer TBC
- May 6-8 – 8th School for Floral Design Judges – Session 3 at LO, Milton
- June ?? – GCO Annual Meeting date and location TBC
- June 22 – Judges' Council Pop-up Session at the RBG
- Oct 28-30 – 8th School for Floral Design Judges – Session 4 at LO, Milton
- Oct ?? – Judges' Council Design/Horticulture
- Oct ?? – GCO Fall Meeting date and location TBC

**“In the depth of winter, I finally learned there was in me an invincible summer.”
Albert Camus**

Upcoming Events



Registration **Deadline** March 3, 2025

Registrar liltovey@hotmail.com

Photographs submitted by March 17, 2025 to
eley@rogers.com AND
millerjacqui@hotmail.com

Results posted April 14, 2025



A very special time of celebration for
the Garden Club of London's

75th Anniversary

To register, visit
GCLCELEBRATION@GMAIL.COM

